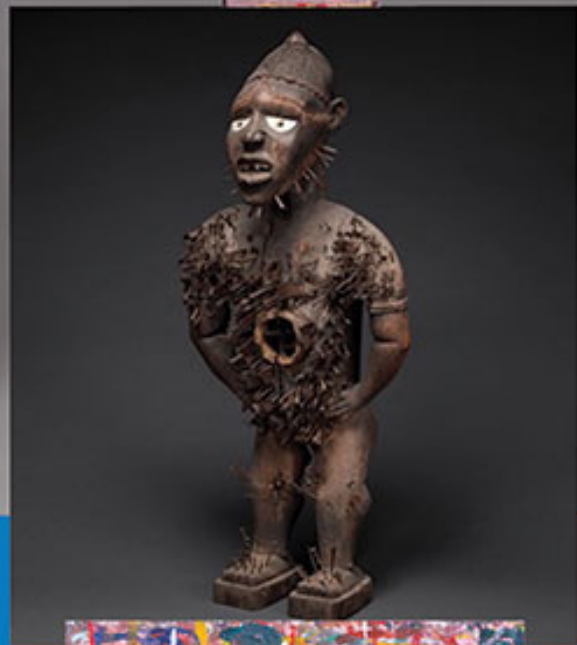


# NKISI N'KONDI: MANGAACA

Kongo Peoples, Yombe Group,  
Power Figure

**Artwork Lesson**



art class  
CURATOR

# Invite Your Students to Explore An Engaging Artwork BENEATH THE SURFACE

Our ARTWORK OF THE WEEK Lessons equip you to teach a complete art experience for your students with:

- artwork discussion questions
- learning activities
- writing worksheets
  - project ideas
  - and more!

Depending on class length and the number of activities you choose, an Artwork of the Week lesson can last for one class period or be extended throughout a full week.



# This is an adaptable, full lesson on *NKisi N'konde*: *Magaaka* (Power Figure)

This is a complete lesson with discussion questions, talking points, activities, and project ideas for the *Nkisi N'Konde* power figure.

## FILES IN THIS LESSON INCLUDE:

- PowerPoint
- Lesson Plan
- Draw From Memory Worksheet

**WORLD OF ART**

Originally: Kingdom of Kongo  
present-day west central

Now: The New York, NY

**ARTWORK**

**ART-CLASS CURATOR** DRAW FROM MEMORY